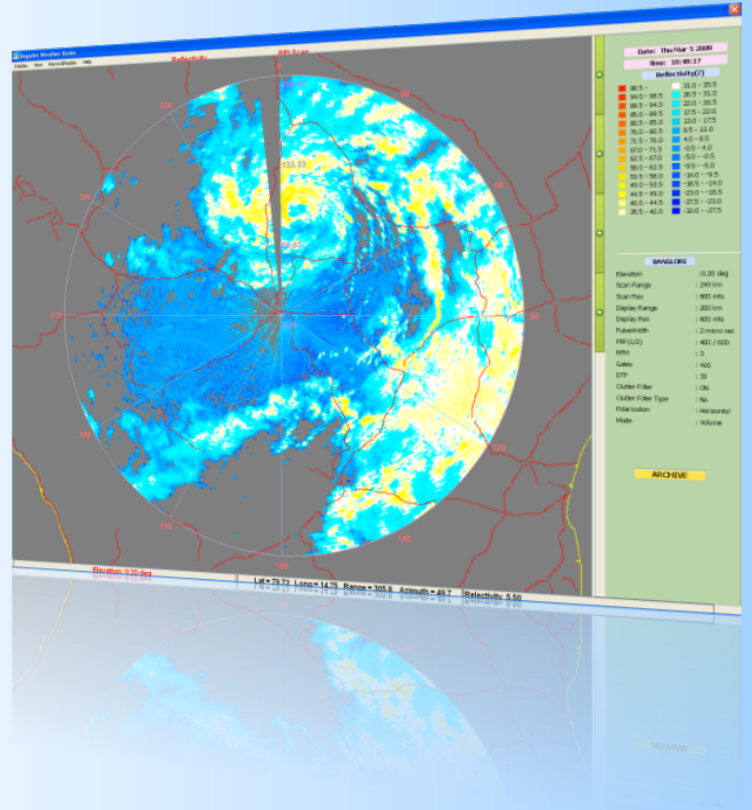


WEATHER RADAR DISPLAY | DEFENCE INDUSTRY

“Portability and Extensibility are crucial for our application. With GCF we are able to achieve our design goals and realize the product in short time. GCF helps a long way in enhancing the re-usability with its ability to convert the design into deployable chunks. GCF abstract component definition helped us to divide the solution into intuitive blocks. Hence we are able to bring more clarity in design and documentation. It bestows modularity to design in real sense! GCF adds flavor that takes you into low level code/service and at high level you can assemble components through XML. It is a Fantastic experience. GCF is an excellent tool to break a system into its architectural blocks“

Gopala Krishna H S, Sr. DGM
Software Division
Bharat Electronics Limited (BEL)



DWR Display | Courtesy : SW Division, BEL

DOPPLER WEATHER RADAR(DWR) DISPLAY

DWR GUI is a weather visualization tool that continuously plots incoming radar data streamed over a TCP/IP socket. Several maps should be layered over and under the radar display to help the user interpret radar plots properly. Apart from rendering the data, DWRGUI provide features for recording incoming data stream on to three separate storage systems connected to the LAN.

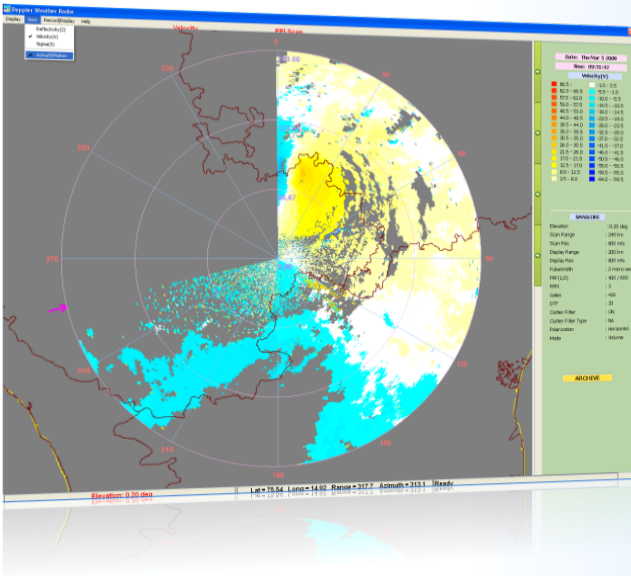
GCF Use Case

With use of GCF, Bharat Electronics Limited (BEL) develop a rock-solid, extensible and flexible Cross-Platform code base. The code base makes best use of distributed component development and seamless integration infrastructure provided by GCF. Now adding, fine-tuning and removing features to DWRGUI is a piece of cake.

GCF – Solutions for DWR Display Multi Platform | Reusable

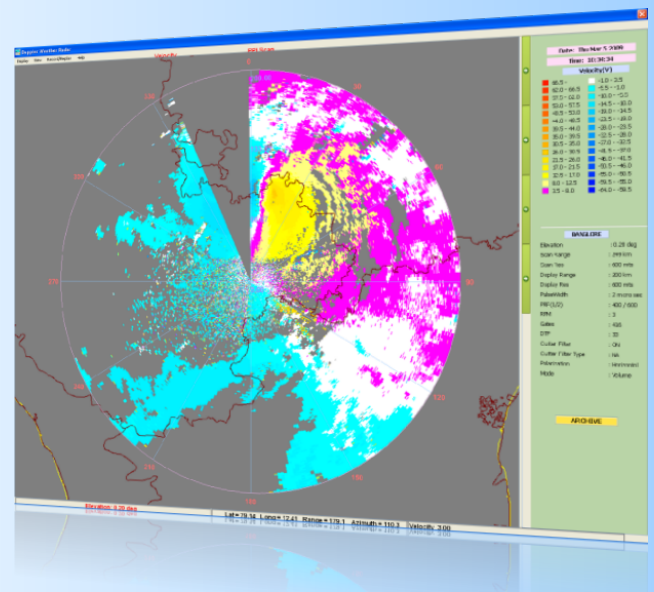
"Our team already had expertise in developing Graphic Intensive Applications on Microsoft platform. However platform independence / portability was a big issue for us, at this crossroad GCF came for our rescue. GCF eases the integration of components and ensures higher productivity. Support from VCreate Logic has been magnificent"

**DWR Team, SW Division
Bharat Electronics Limited (BEL)**



Screen Shot : DWR Displays | Courtesy : SW Division, BEL

GCF provided a flexible framework for designing and implementing different aspects of DWR GUI and bringing them together easily. With GCF the main components such as 'Configuration Panel', 'PPI Display', 'RHI Display', 'Radar Data Source' and 'Radar Data Store' are initially designed. And the Interfaces, functionalities and inter-component communication paths for each of these components can be designed by different teams independently. GCF's GUIXML technology will help quickly bringing all the components together into a single application. 'Radar Data Store' component will make use of GCF's RPC mechanism to record incoming stream in three separate remote storage systems, with this it brought down the whole issue of remote storage down to simple "signals and slots"!



Screen Shot : DWR Displays | Courtesy : SW Division, BEL